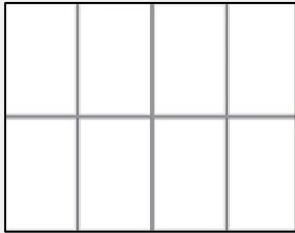
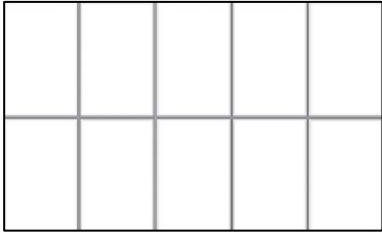
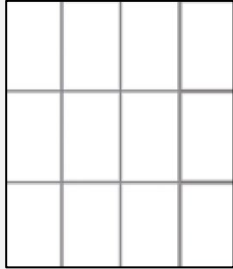
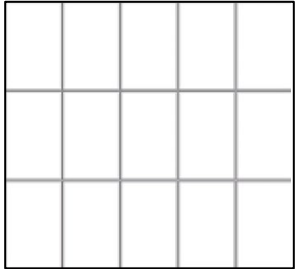
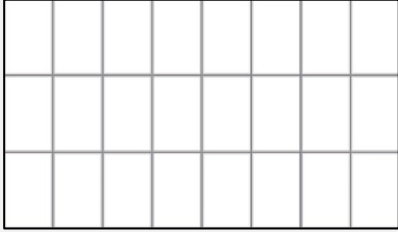


STANDING PACK - Fissaggio su tetto in tegole

Configurazione da 3 kWp	Quantità pannelli	Layout standard
Composto da: <ul style="list-style-type: none">• 6 Binari (3,3m)• 4 Collegamenti binario• 20 Morsetti universali• 20 Ganci per tetti in tegole in acciaio• 20 Viti TESTA A MARTELLO M8X20• 20 Dadi FLANGIATI M8	8	
Configurazione da 4 kWp	Quantità pannelli	Layout standard
Composto da: <ul style="list-style-type: none">• 8 Binari (3,3m)• 4 Collegamenti binario• 24 Morsetti universali• 24 Ganci per tetti in tegole in acciaio• 24 Viti TESTA A MARTELLO M8X20• 24 Dadi FLANGIATI M8	10	
Configurazione da 5 kWp	Quantità pannelli	Layout standard
Composto da: <ul style="list-style-type: none">• 12 Binari (3,3m)• 6 Collegamenti binario• 30 Morsetti universali• 30 Ganci per tetti in tegole in acciaio• 30 Viti TESTA A MARTELLO M8X20• 30 Dadi FLANGIATI M8	12	
Configurazione da 6 kWp	Quantità pannelli	Layout standard
Composto da: <ul style="list-style-type: none">• 12 Binari (3,3m)• 6 Collegamenti binario• 36 Morsetti universali• 36 Ganci per tetti in tegole in acciaio• 36 Viti TESTA A MARTELLO M8X20• 36 Dadi FLANGIATI M8	15	
Configurazione da 10 kWp	Quantità pannelli	Layout standard
Composto da: <ul style="list-style-type: none">• 18 Binari (3,3m)• 12 Collegamenti binario• 54 Morsetti universali• 54 Ganci per tetti in tegole in acciaio• 54 Viti TESTA A MARTELLO M8X20• 54 Dadi FLANGIATI M8	24	



VS+ MONTAGESCHIENE 41 X 35 MM
VS+ MOUNTING RAIL 41 X 35 MM

0,593 kg/m

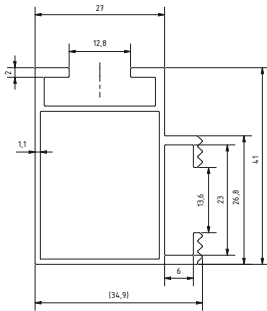
Material: Aluminium

Zertifizierung: TÜV ID: 1111212485;
MCS012 IK0197/03

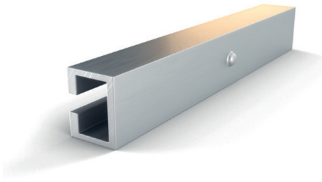
0,593 kg/m

Material: Aluminum

Certification: TÜV ID: 1111212485;
MCS012 IK0197/03



Länge/ Length	Farbe/ Colour	Artikelnummer/ Article Number
2250 mm	Blank/blank	400523
2250 mm	Schwarz/black	400523-B
3300 mm	Blank/blank	400524
3300 mm	Schwarz/black	400524-B
4400 mm	Blank/blank	400525
4400 mm	Schwarz/black	400525-B
6200 mm	Blank/blank	400513
Zuschnitt/ Cusom cut	Blank/blank	400519
Zuschnitt/ Cusom cut	Schwarz/black	400519-B



VS+ SCHIENENVERBINDER 41 X 35
VS+ RAIL CONNECTOR 41 X 35

400531

195x24,1x30 mm

0,151 kg

Schienenlänge: 195,0 mm

Material: Aluminium

Zertifizierung: TÜV ID: 1111212485;

MCS012 IK0197/03

Verwendbar mit: VS+ Montageschiene 41
x 35 mm

195x24,1x30 mm

0,151 kg

Rail length: 195,0 mm

Material: Aluminum

Certification: TÜV ID: 1111212485;

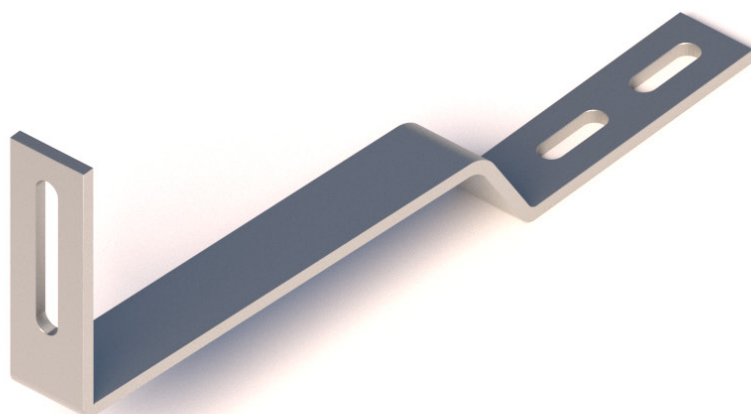
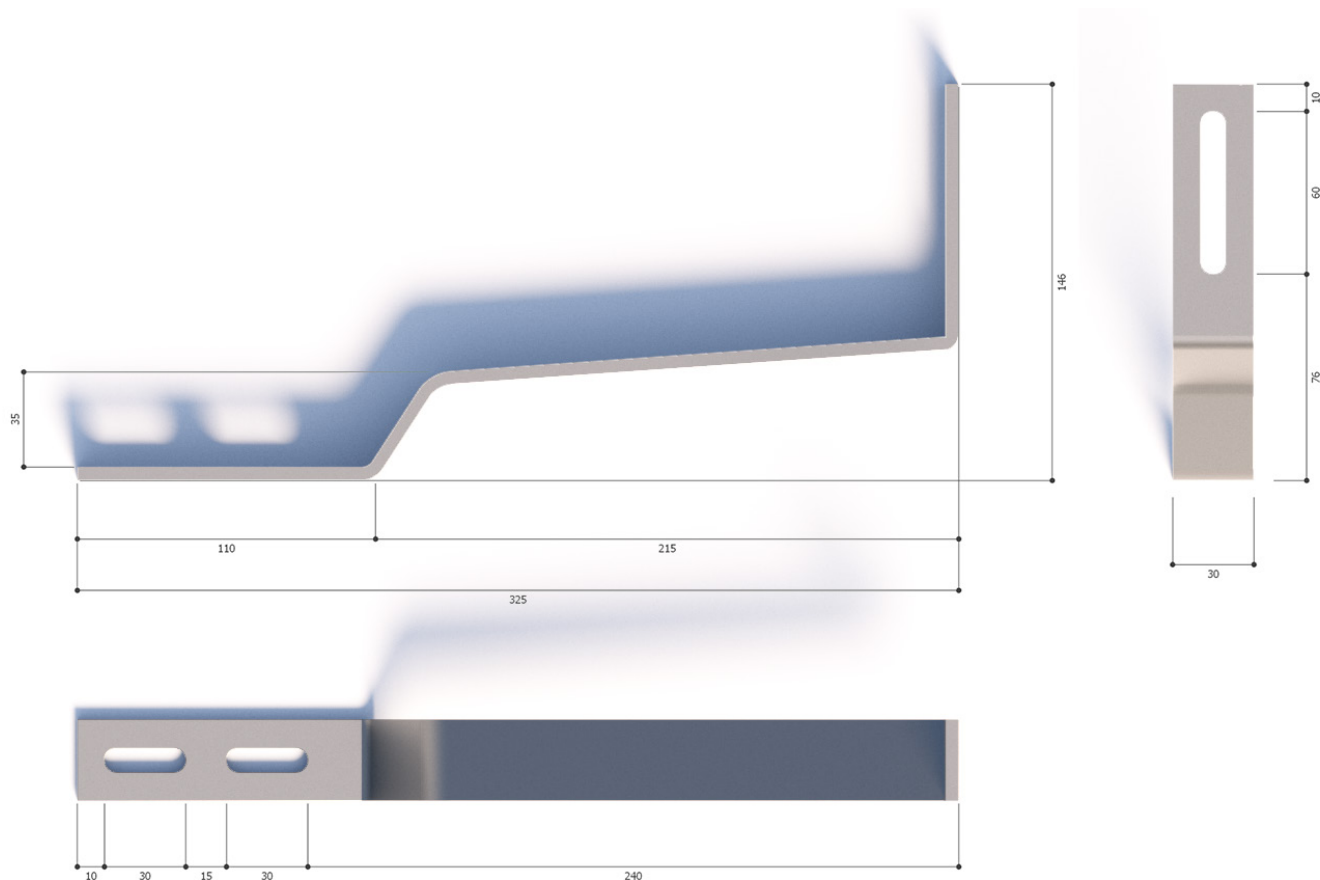
MCS012 IK0197/03

Usable with: VS+ Mounting rail 41 x 35 mm

Gancio per tetto in tegole in acciaio GREENSUN

LAMIERA AISI430 SP.5mm

CODICE GRSSTADIS0000006





RS1

RS1

420080

35x36,5x60 mm

0,083 kg

Set ist vormontiert

Material: Korrosiongeschützter Stahl

Zertifizierung: ETN 010T1606; TÜV ID:
1111212485; MCS012 IK0197

Modularten: Gerahmte Module

Rahmenhöhe: 30,0 - 50,0 mm

Max. Anzugsmoment: 13,00 Nm

Antrieb: Innensechskant 5mm

35x36,5x60 mm

0,083 kg

Set pre-assembled

Material: Corrosion resistant steel

Certification: ETN 010T1606; TÜV ID:
1111212485; MCS012 IK0197

Module types: Framed modules

Module thickness: 30,0 - 50,0 mm

Max. torque: 13,00 Nm

Drive: Hexagon socket 5 mm



RS1 (SCHWARZ)
RS1 (BLACK)

420080-BE

35x36,5x60 mm

0,087 kg

Set ist vormontiert

Material: Korrosiongeschützter Stahl

Zertifizierung: TÜV ID: 1111212485;

MCS012 IK0197

Modularten: Gerahmte Module

Rahmenhöhe: 30,0 - 50,0 mm

Max. Anzugsmoment: 13,00 Nm

Antrieb: Innensechskant 5mm

35x36,5x60 mm

0,087 kg

Set pre-assembled

Material: Corrosion resistant steel

Certification: TÜV ID: 1111212485;

MCS012 IK0197

Module types: Framed modules

Module thickness: 30,0 - 50,0 mm

Max. torque: 13,00 Nm

Drive: Hexagon socket 5 mm